

Gully Trap Specifications

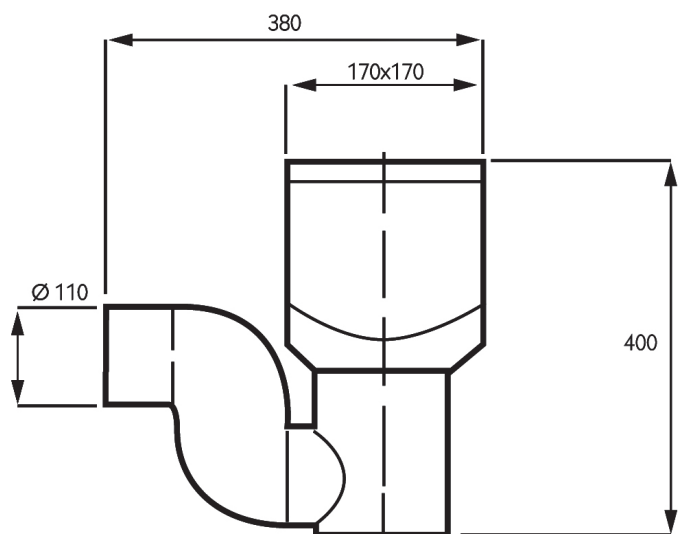
Nabridas Z gully trap is intended for connections of discharge domestic waste and/or rainwater and for installation in non-vehicular traffic areas. It terminates at surface level with removable grating provided for cleaning purposes.

Nabridas Z Gully Trap is manufactured according to BS 4660:2000. High quality 100% virgin UV stabilized polyethylene (PE) raw material is used to make this unique and versatile product.



Dimensions

Height (mm)	400
Width (mm)	380
Top opening (mm)	170 x 170
Spigot outlet (mm)	DN 110
Depth of water seal (mm)	130
Connections : Inlet connection pipes from DN 25 up to DN 110 can be connected on all four sides.	
Standard : BS 4660: 2000 (MSB Tested)	



General Installation procedures

The inlets can be connected all around the Gully trap rectangular surfaces. A total of four inlets of DN 110 mm or smaller size can be connected.



Back-filling

The gully trap terminates at surface level with removable grating. It can be surrounded with selected fill or lean concrete.

All descriptions, illustrations and installation instructions are provided in good faith for guidance only. Installation instruction of consulting Engineer based on exact site considerations and local Government guidelines must be followed. All dimensions are nominal and Nabridas reserves the right to modify products without prior notice.

For rainwater application use the top opening to prevent debris from getting into the gully trap.